

THE ADVENTURES OF **PLUMBER PARKER**

AND THE BASEMENT FLOOD

WASTEWATER TREATMENT PLANT





This comic is the eighth in a series of comic books created by First Nations Technical Services Advisory Group to teach students in grade 3-6 about the Superheroes that make and keep our water safe to use.

PDF copies of this booklet and other educational materials are available from TSAG.

Telephone: 780 486 8601

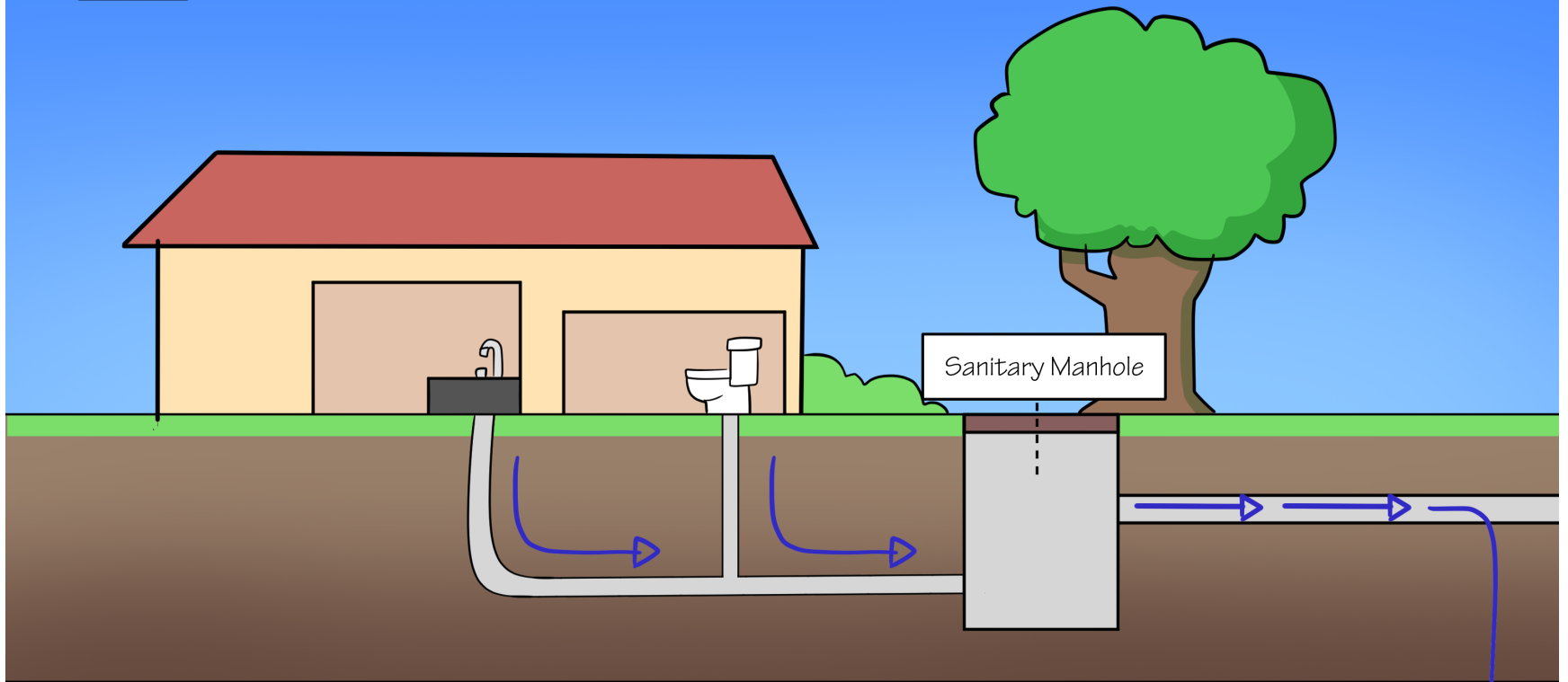
Email: crtp@tsag.net

*Address: 18232-102 Ave, Edmonton,
Alberta. T5S 1S7.*



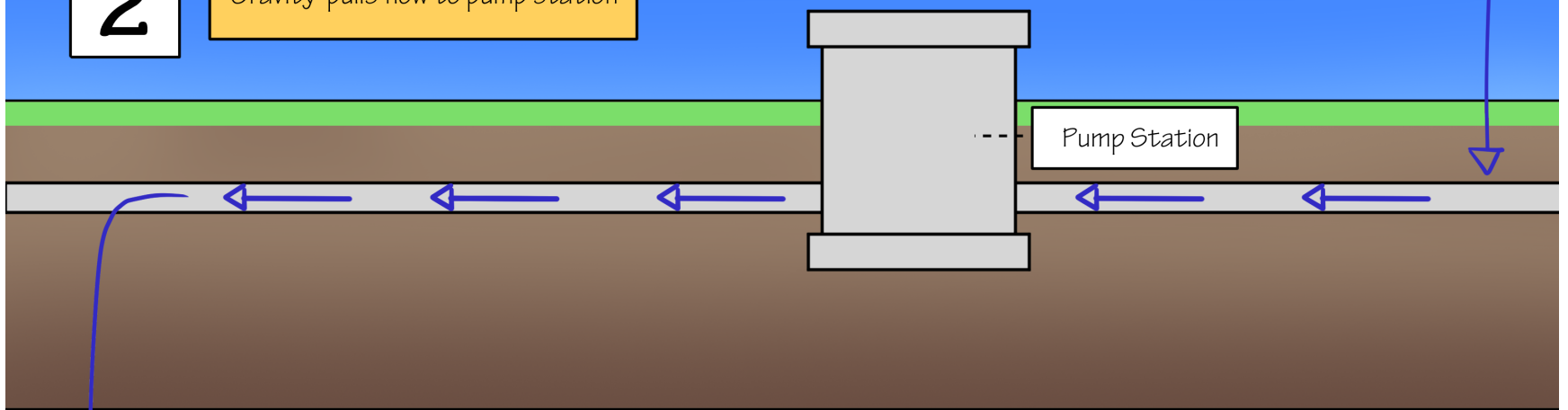
1

After Flushing



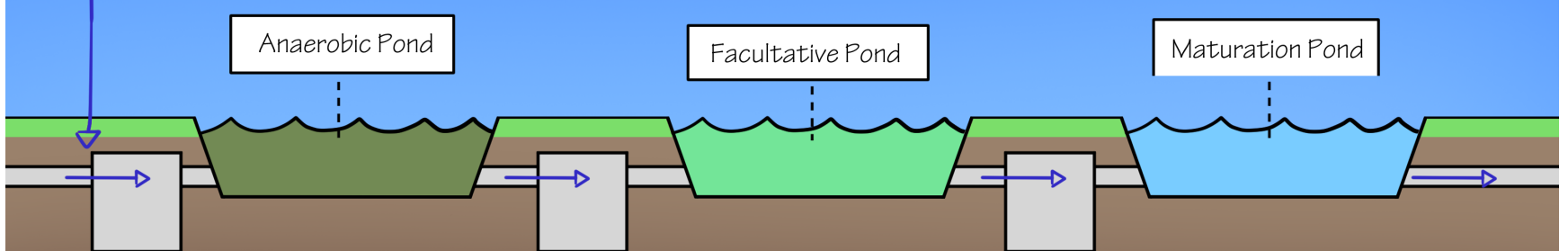
2

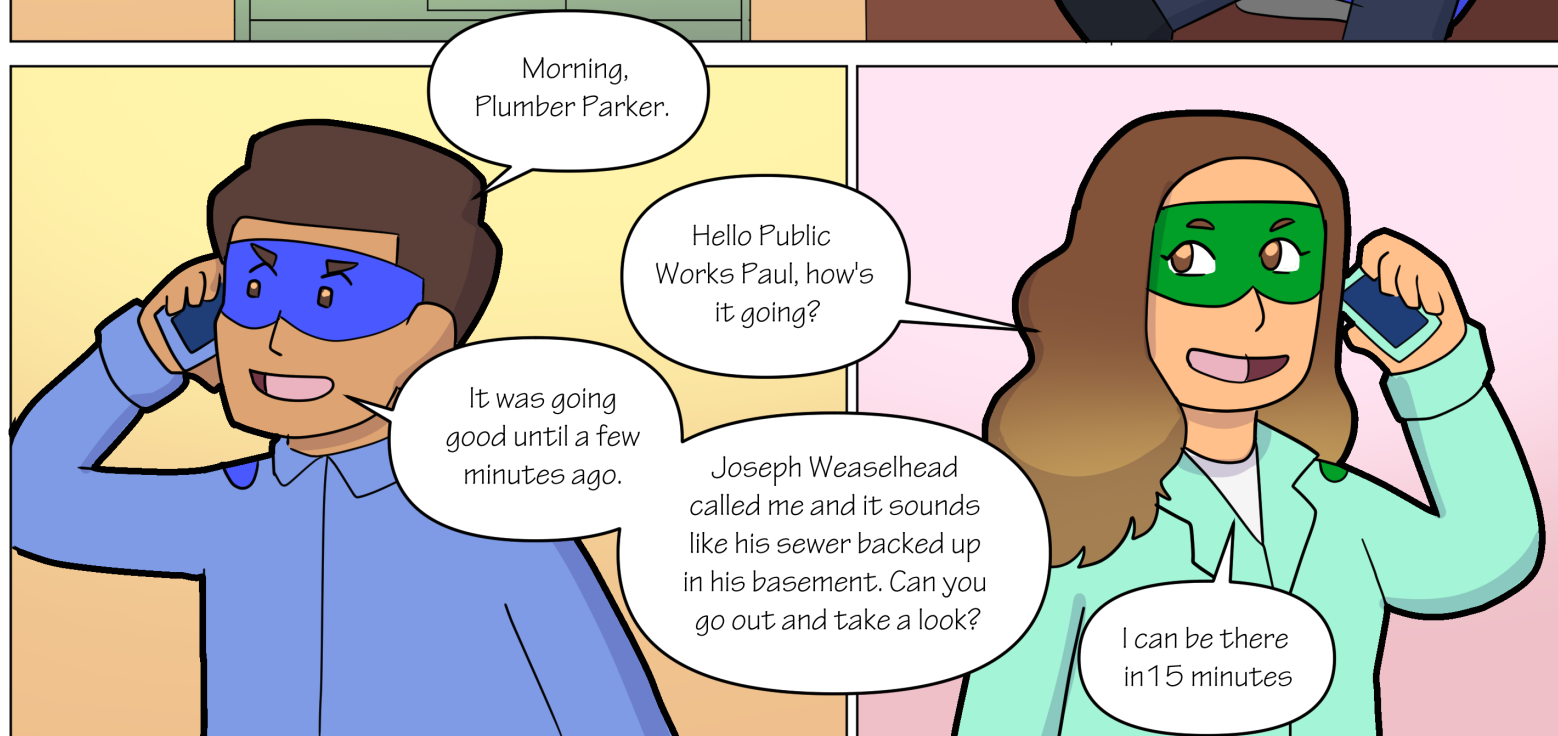
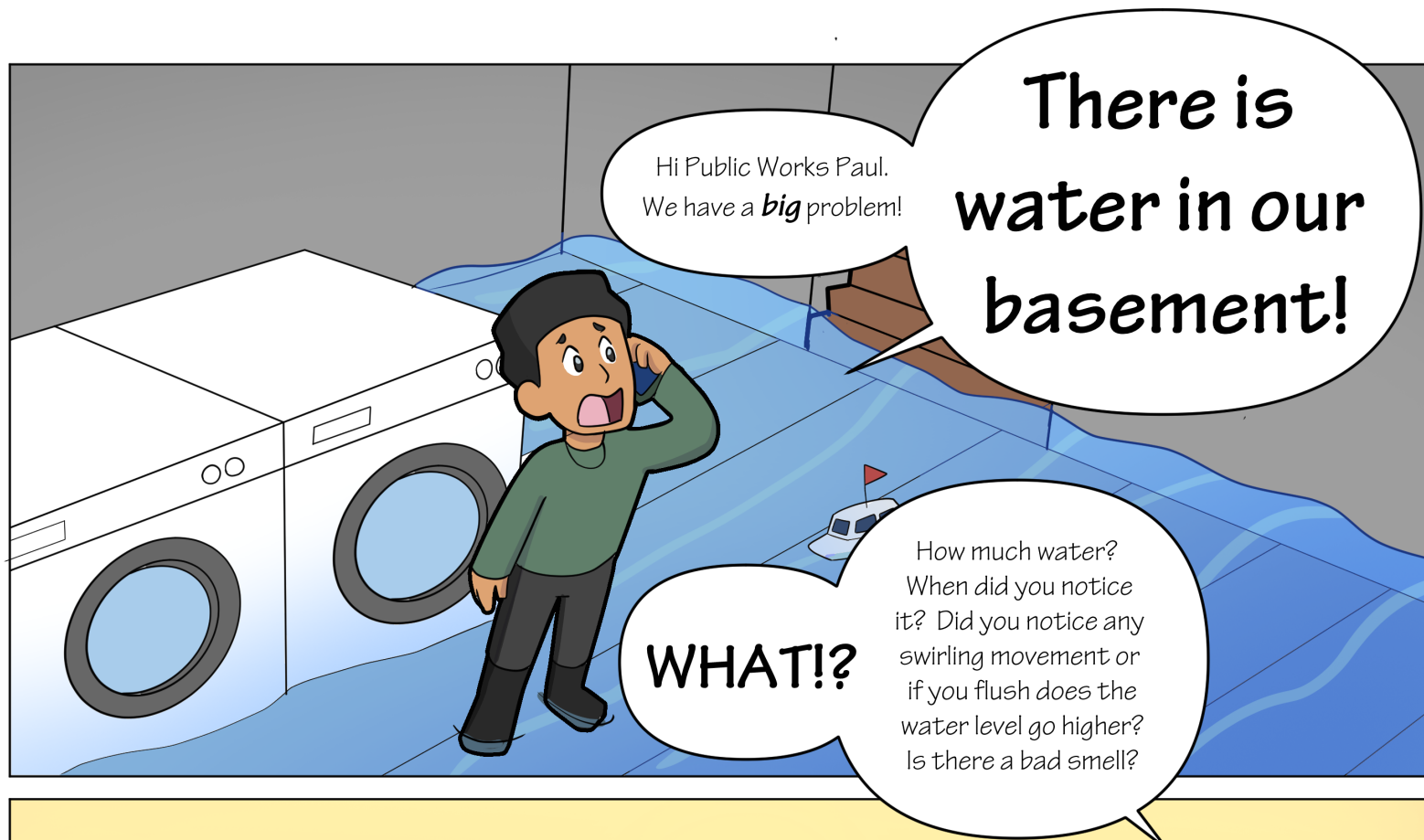
Gravity pulls flow to pump station

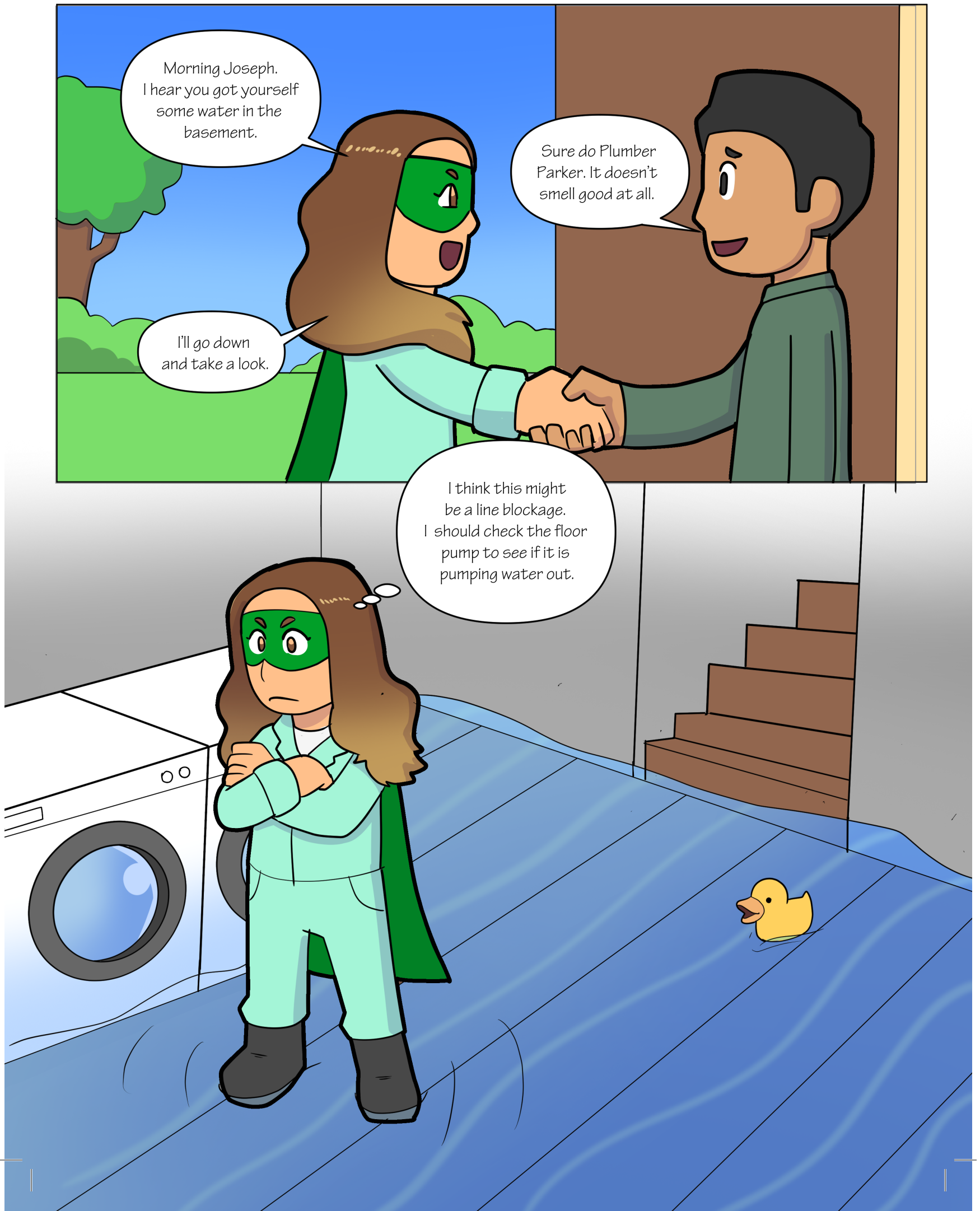


3

Wastewater Stabilization Ponds







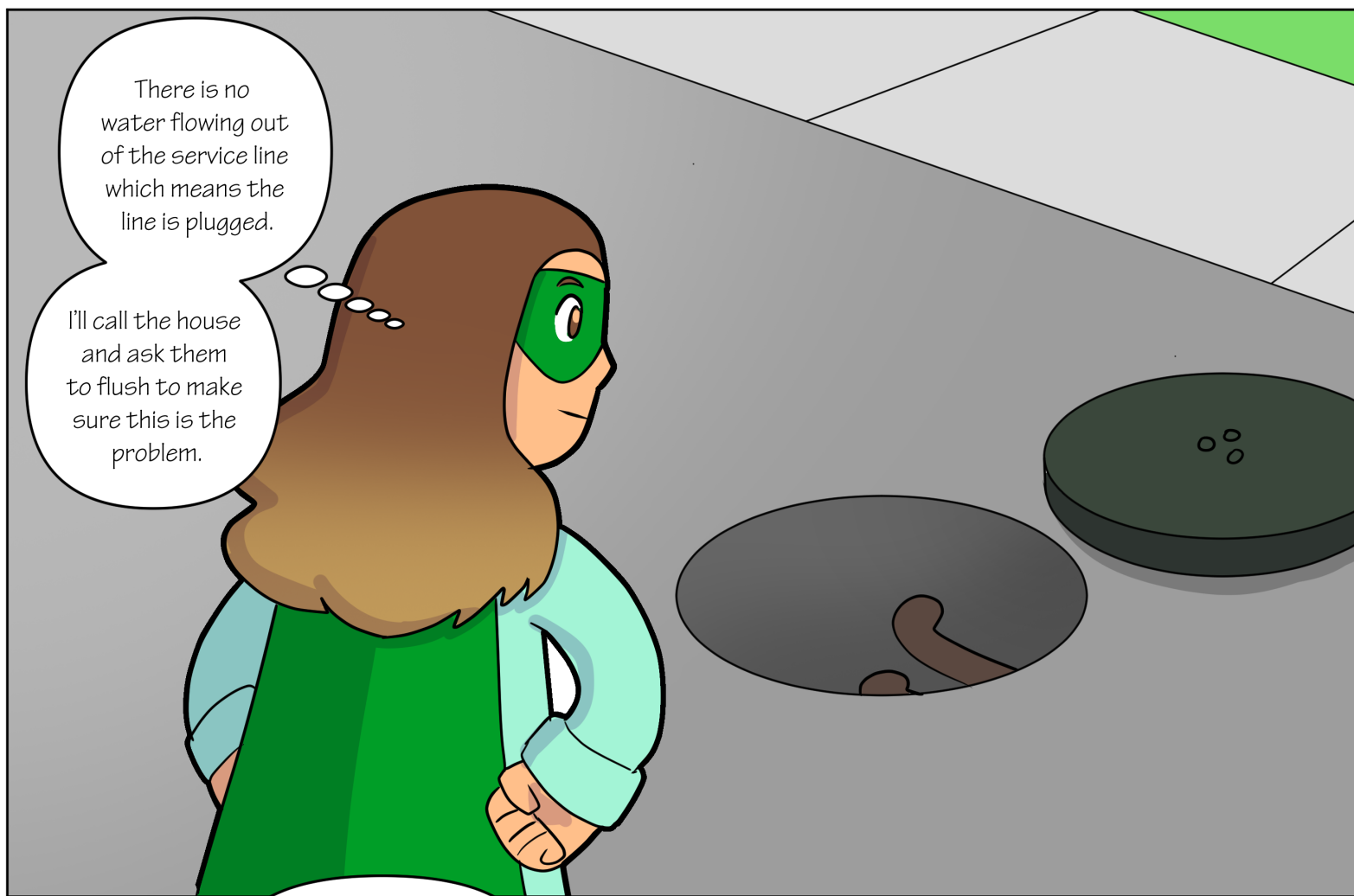
Morning Joseph.
I hear you got yourself
some water in the
basement.

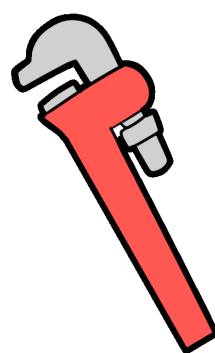
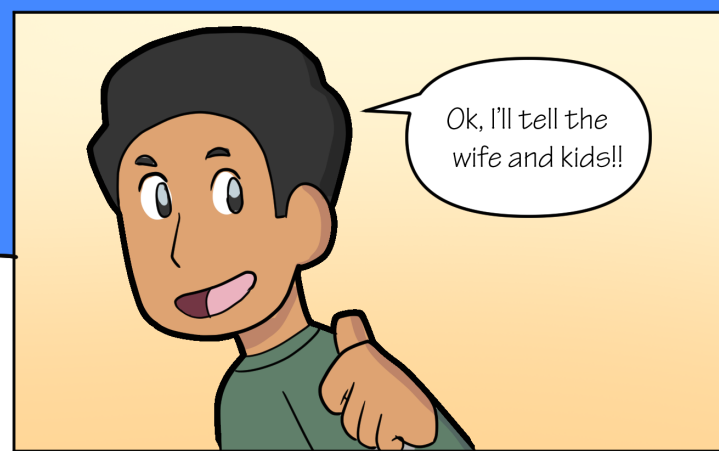
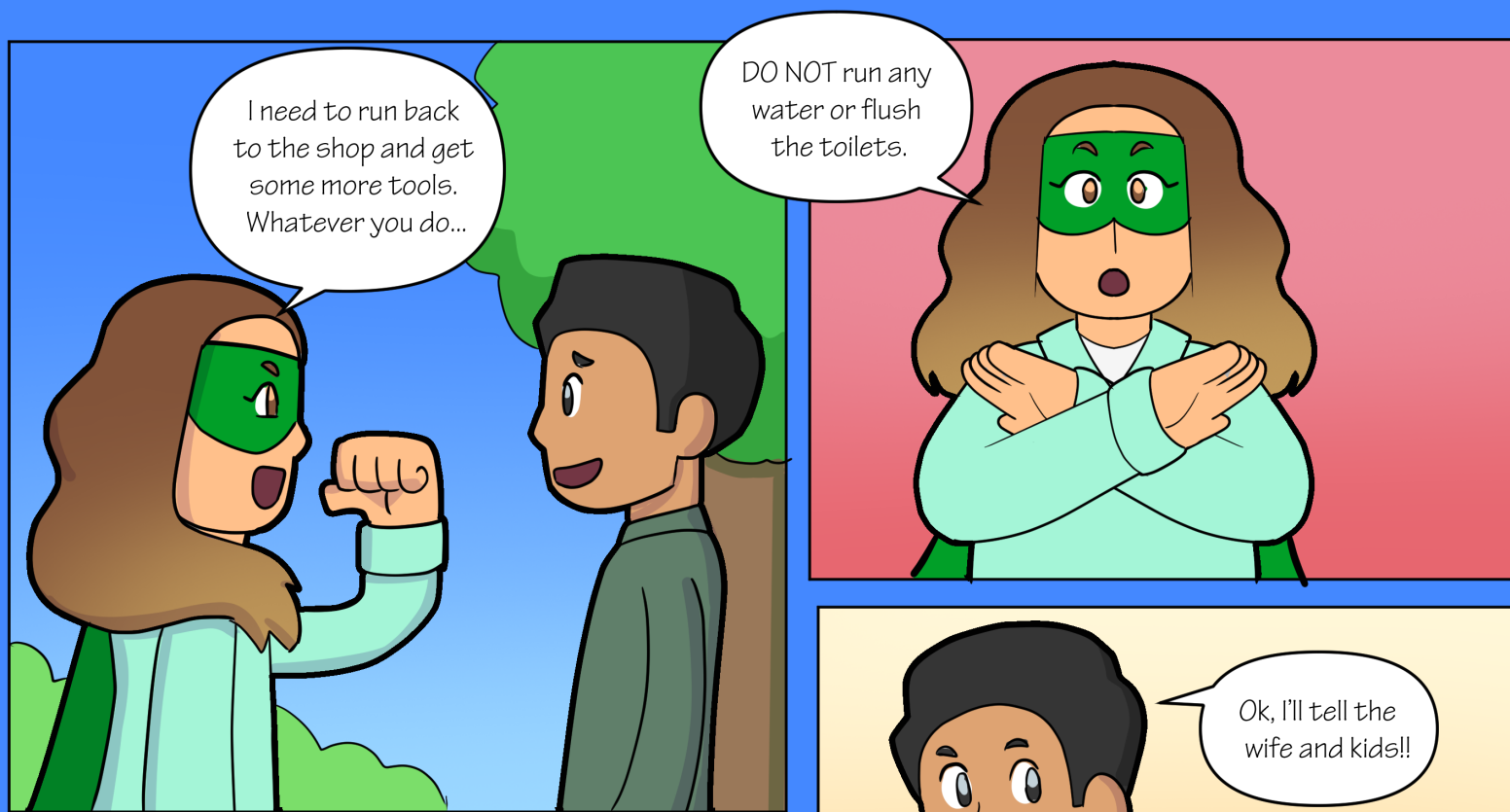
Sure do Plumber
Parker. It doesn't
smell good at all.

I'll go down
and take a look.

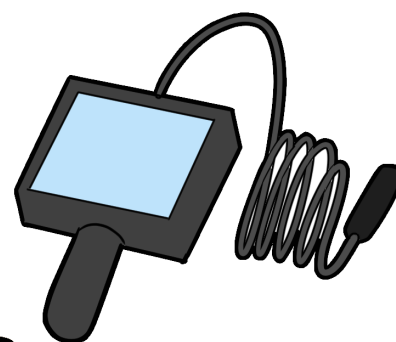
I think this might
be a line blockage.
I should check the floor
pump to see if it is
pumping water out.







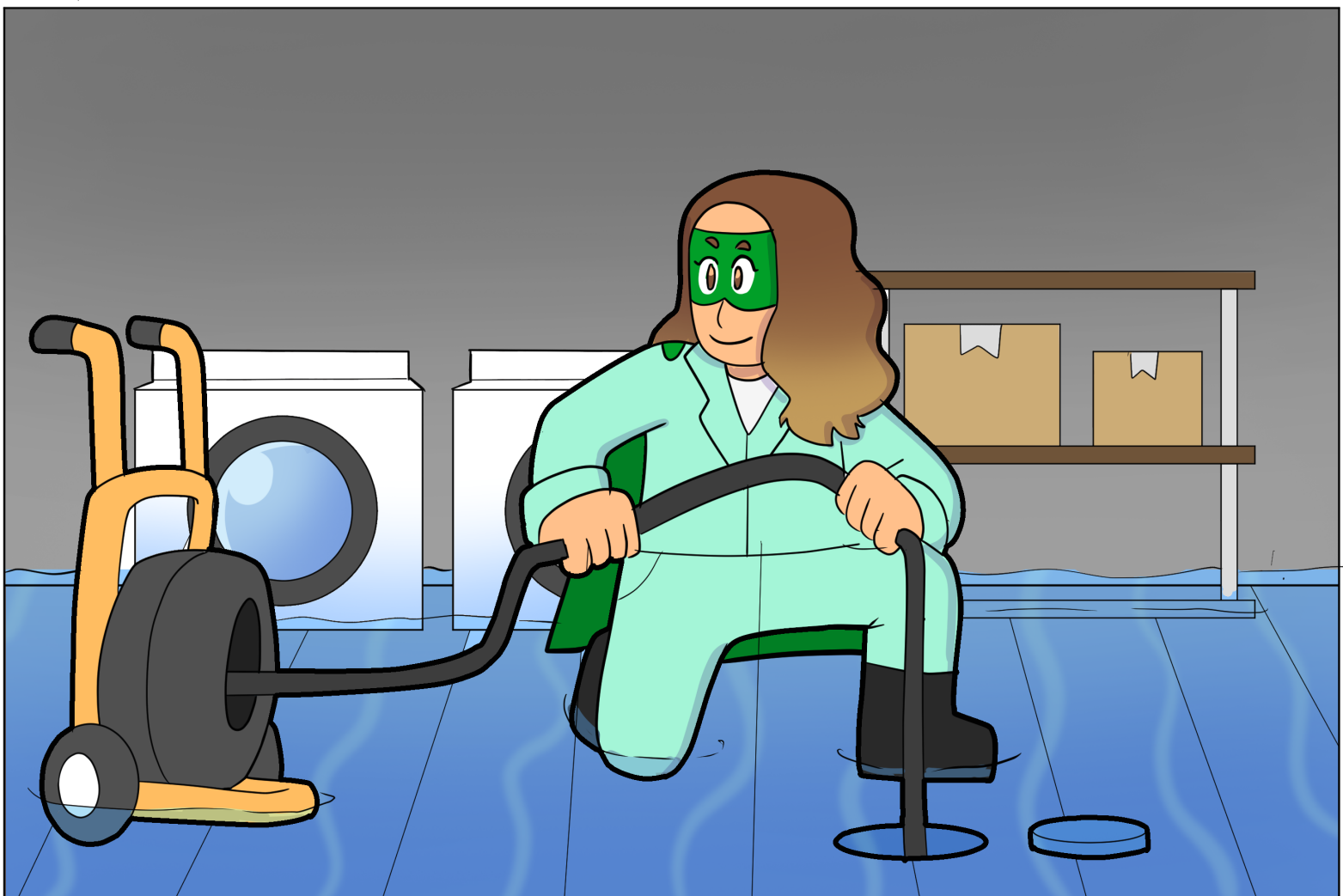
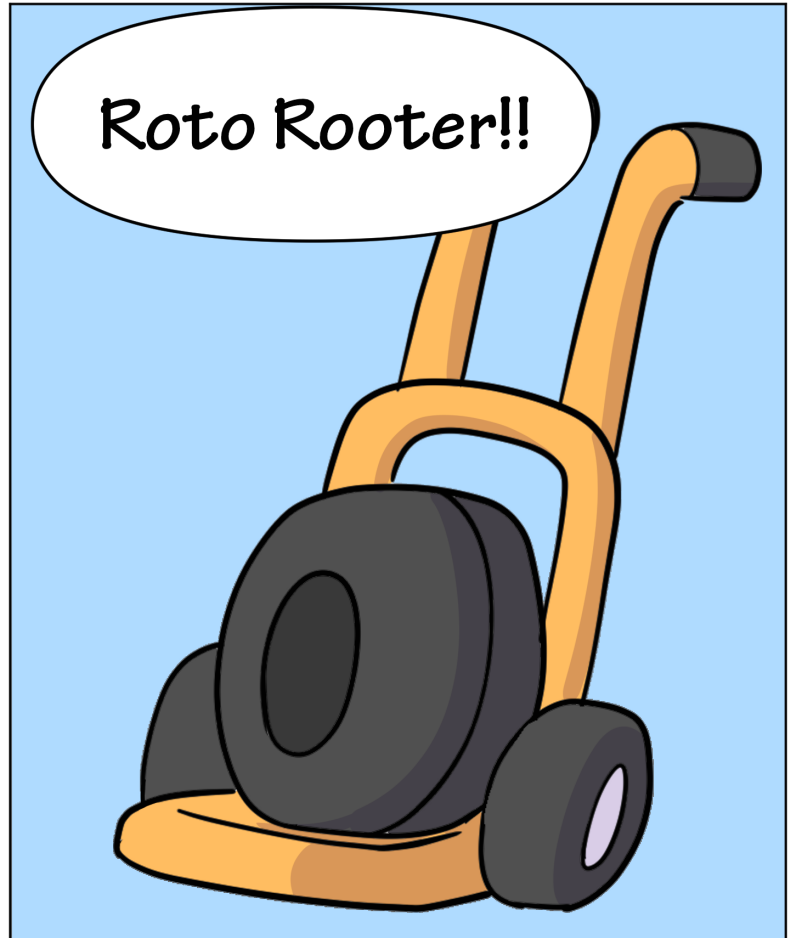
Pipe Wrench

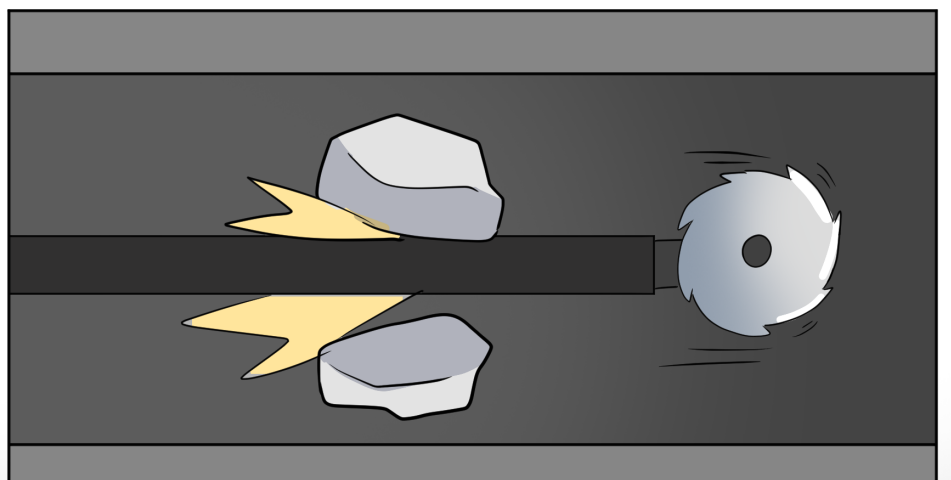
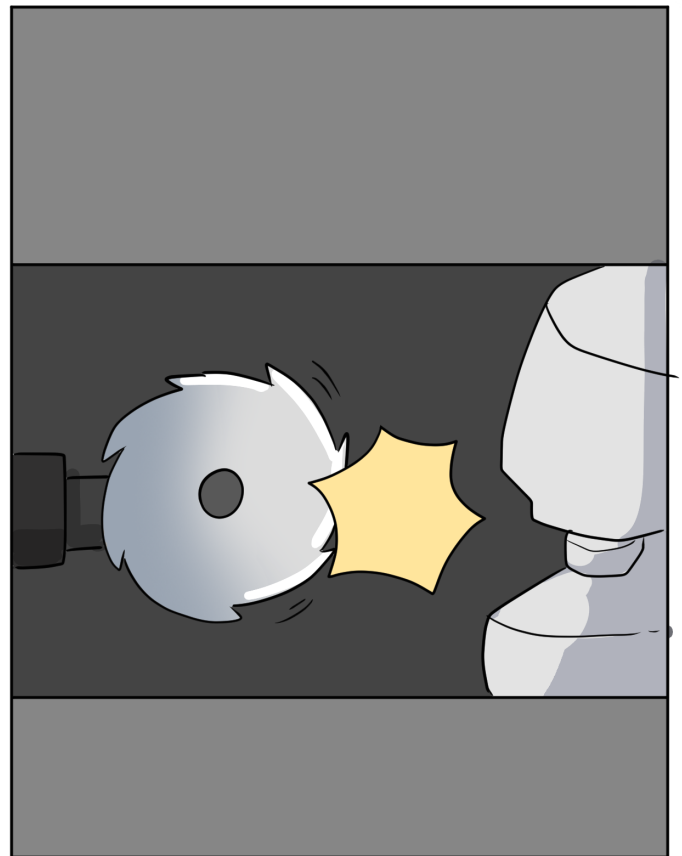
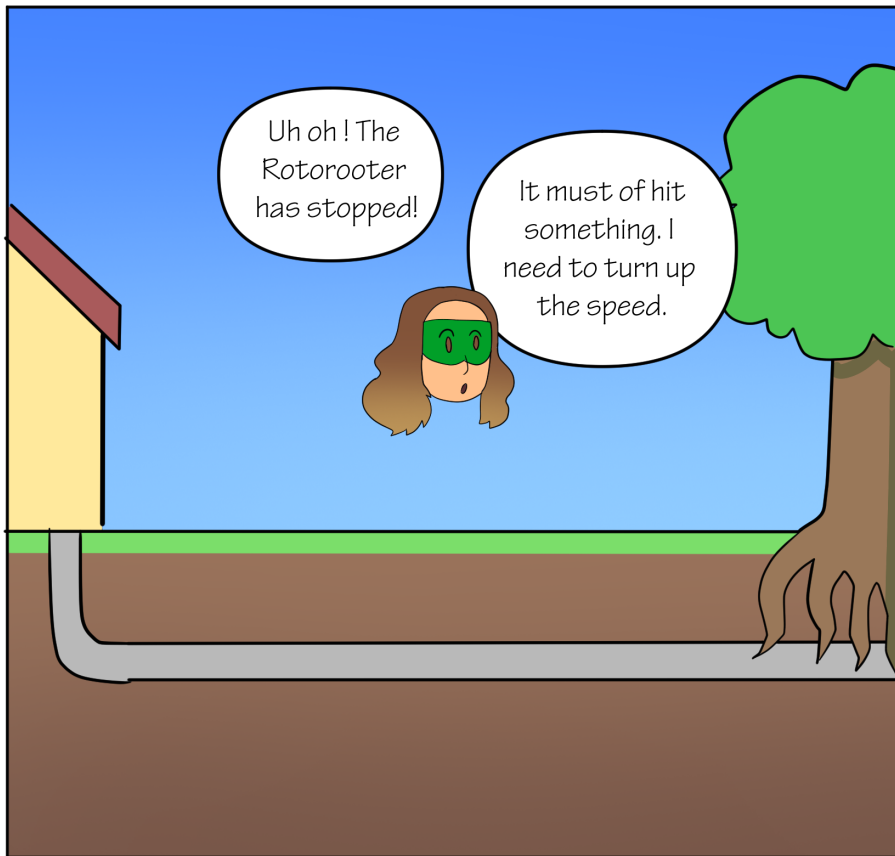


Inspection Camera

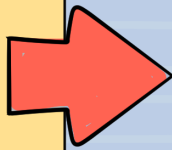
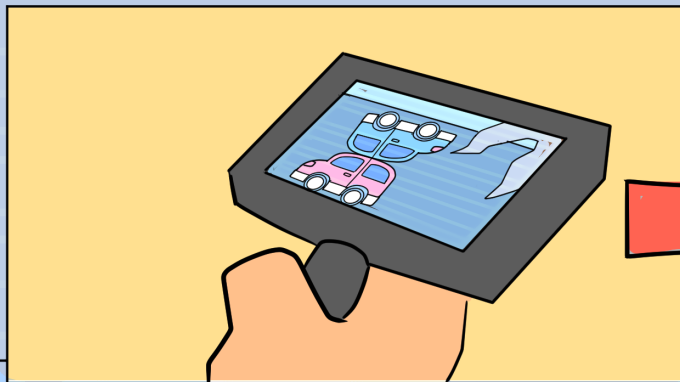


Roto Rooter

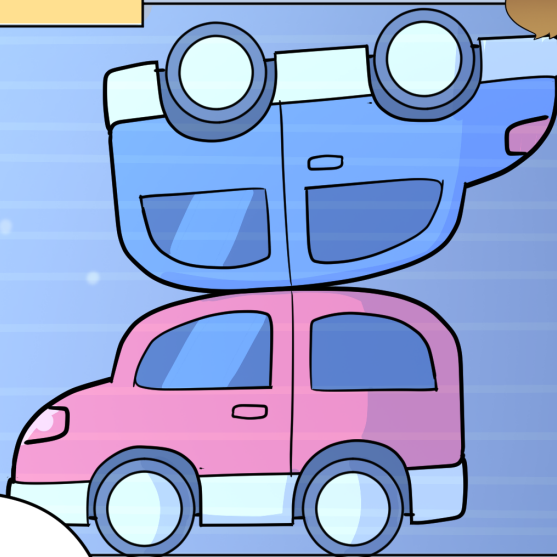




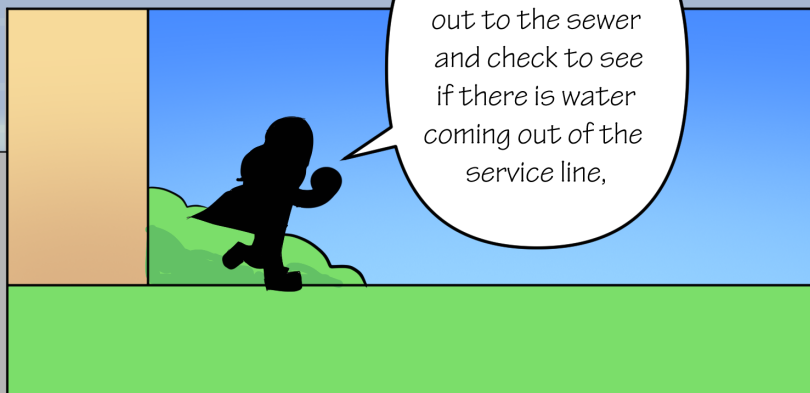
CAMERA VIEW



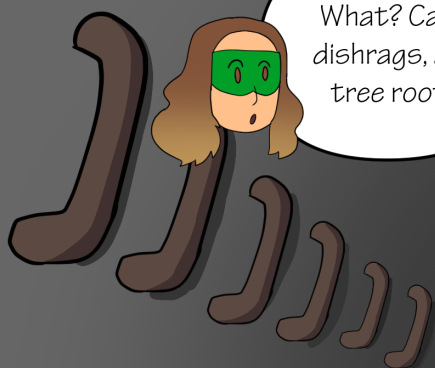
Oh my! I can see tree roots going into the pipe, and some small toy cars.

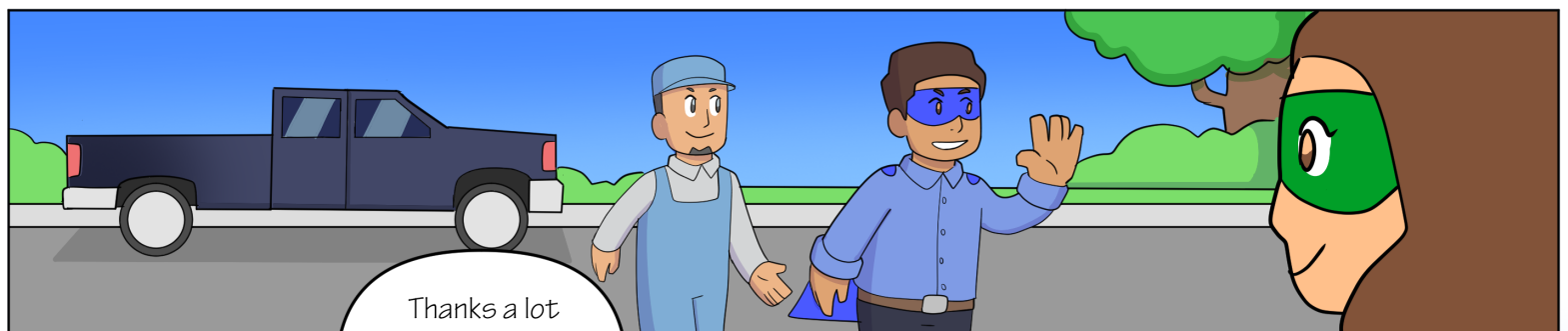
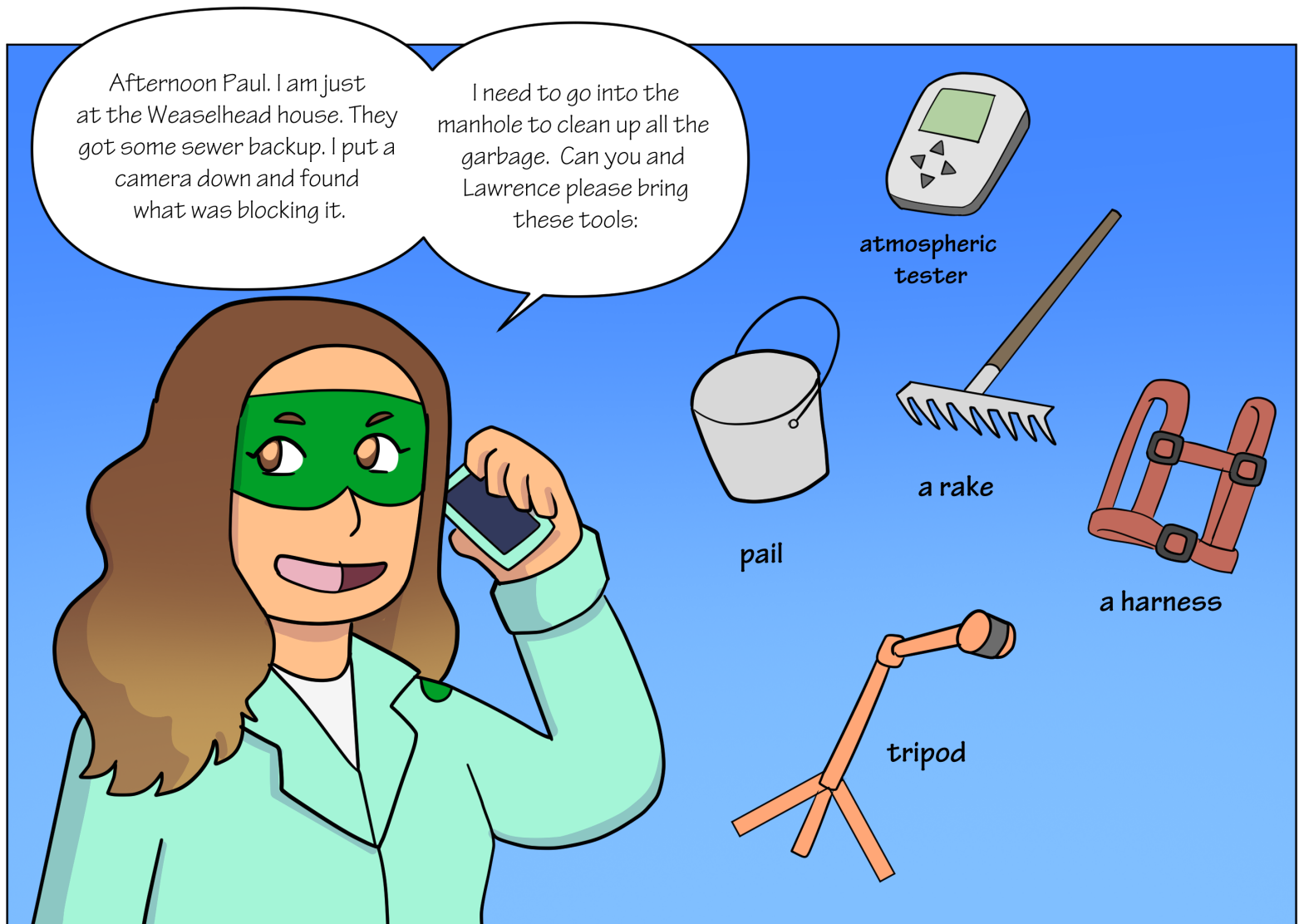


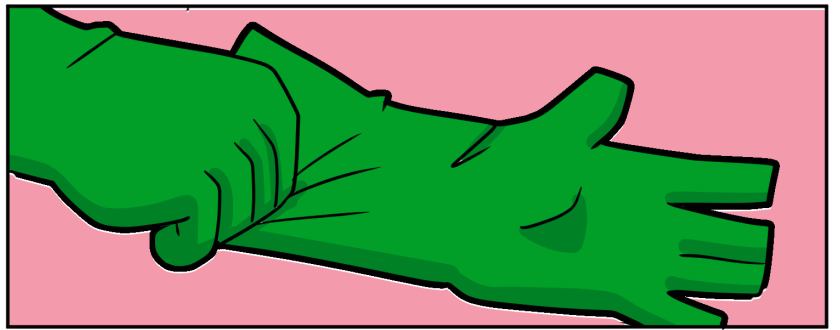
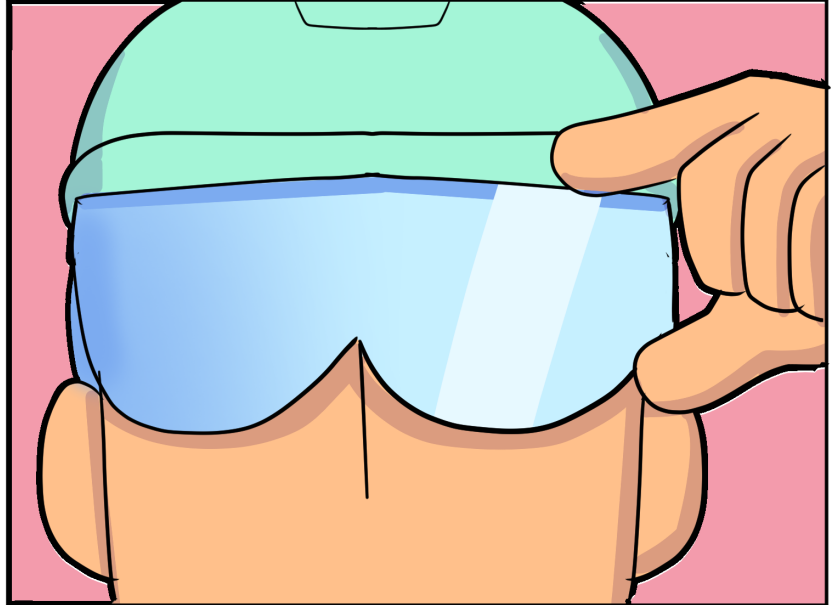
I need to go out to the sewer and check to see if there is water coming out of the service line,

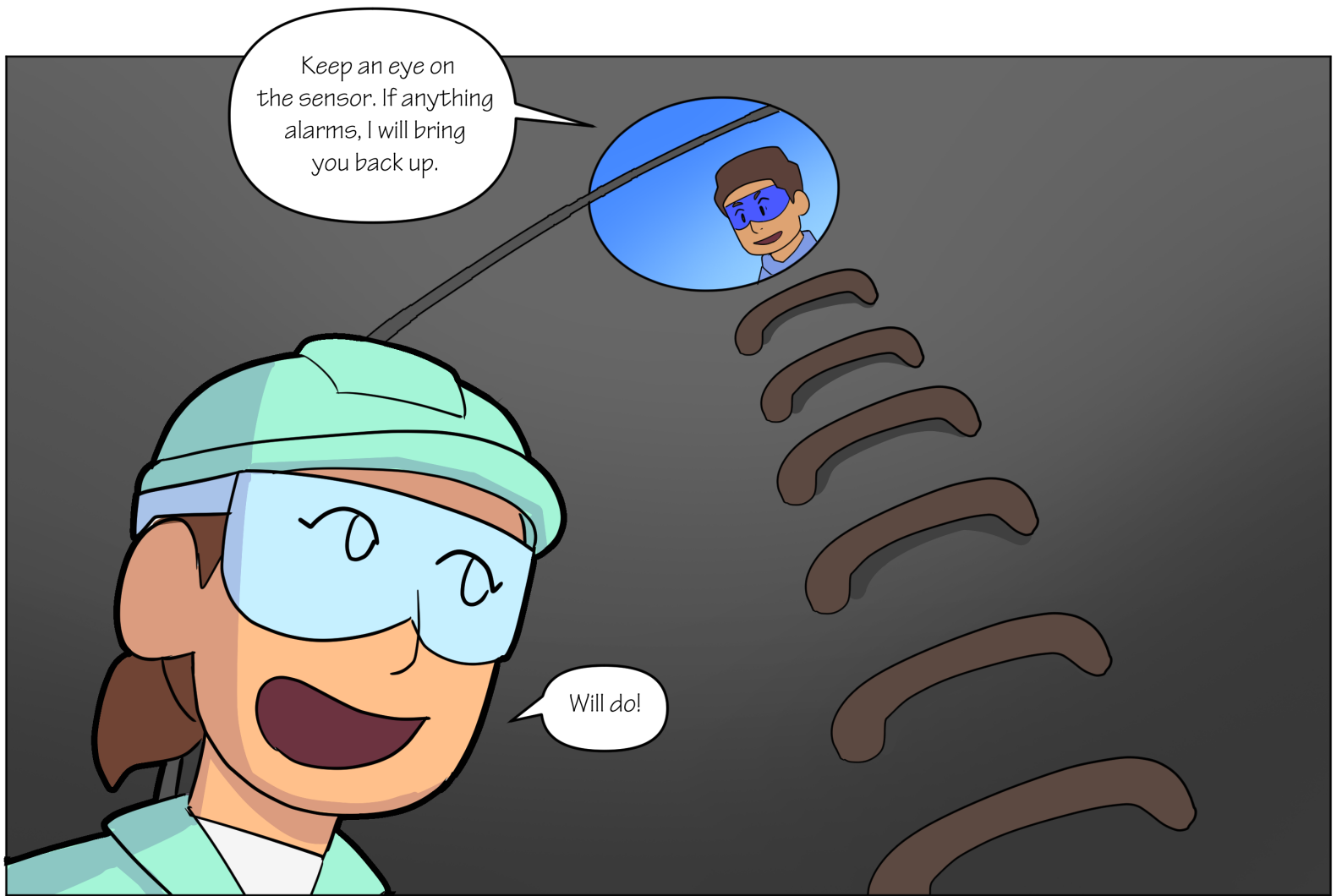


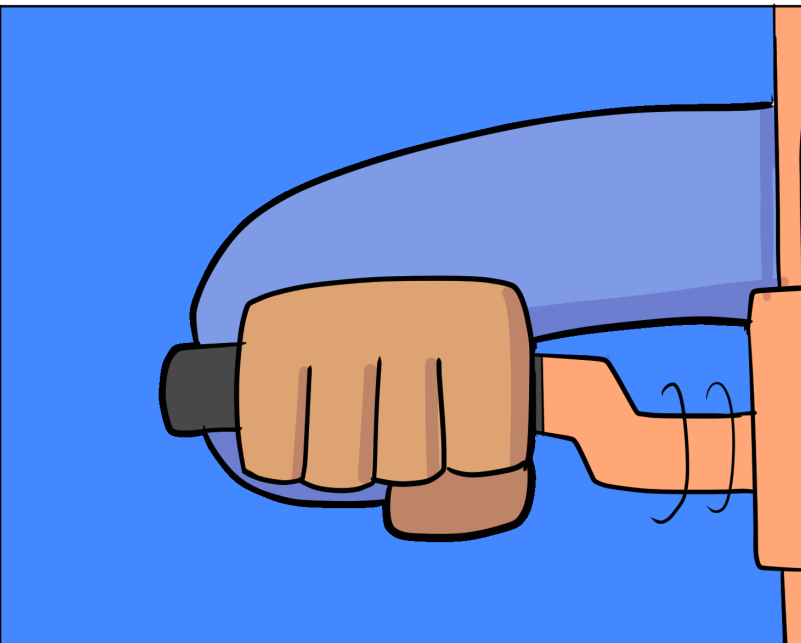
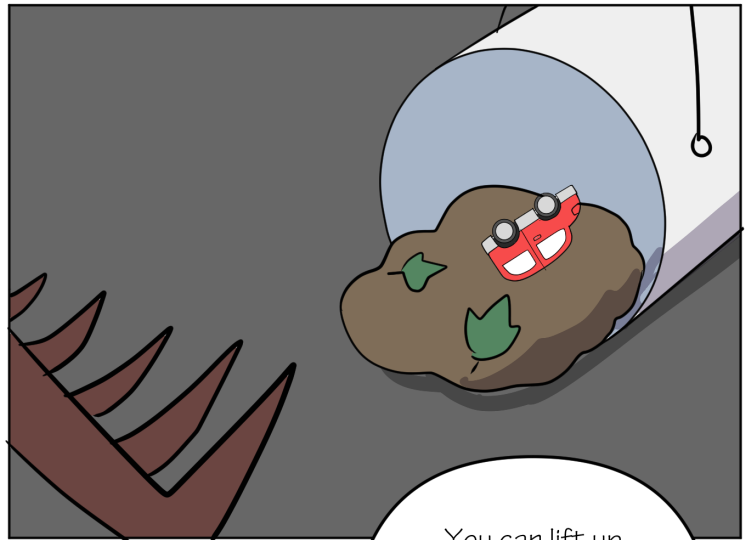
What? Cars, dishrags, and tree roots!

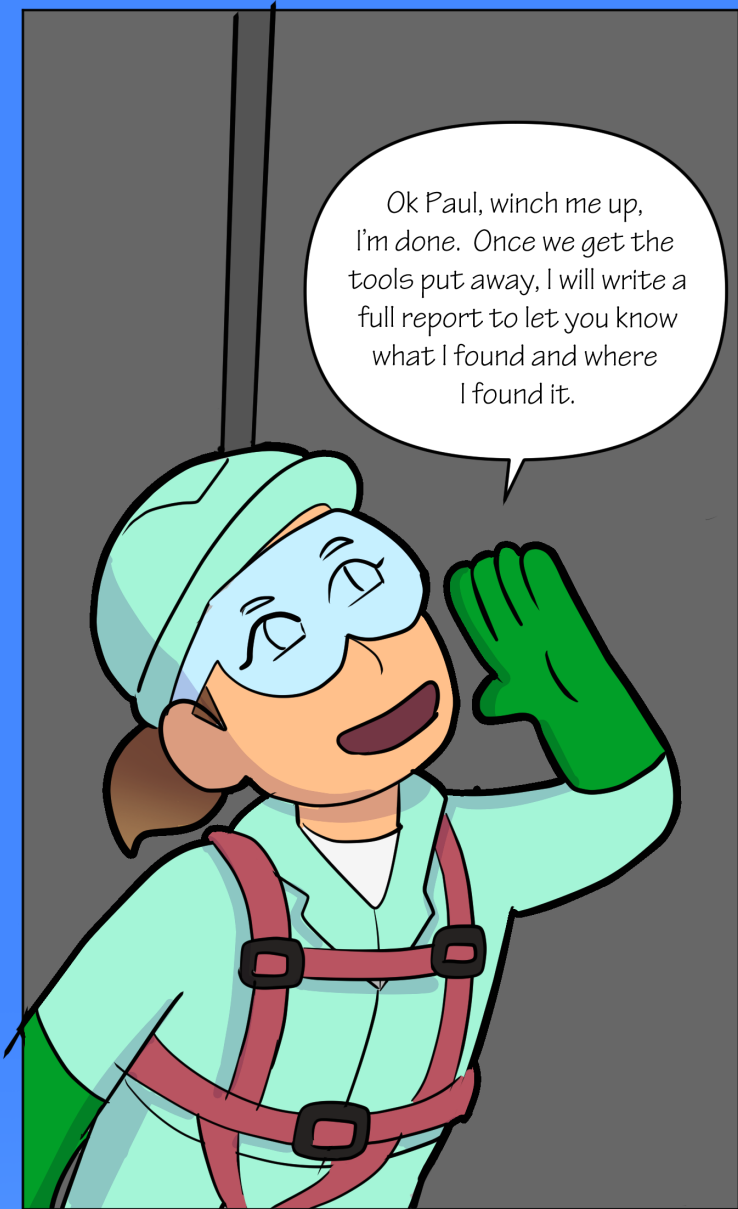




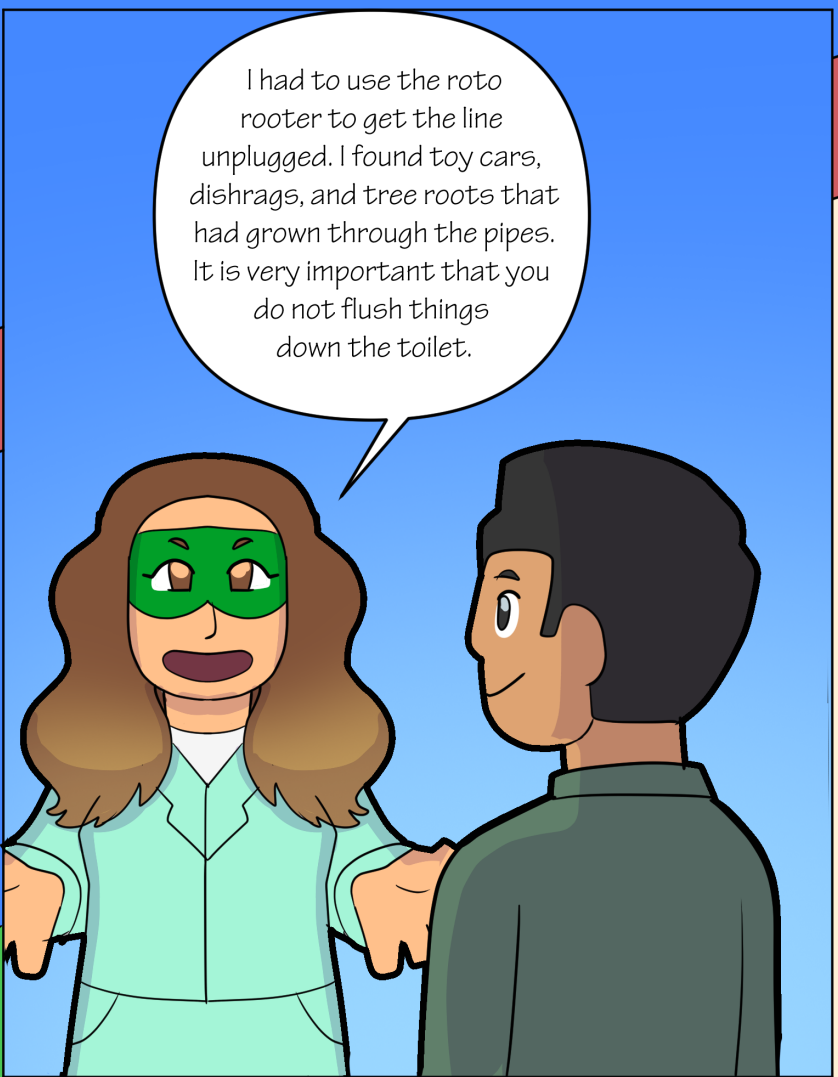








Ok Paul, winch me up, I'm done. Once we get the tools put away, I will write a full report to let you know what I found and where I found it.



I had to use the roto rooter to get the line unplugged. I found toy cars, dishrags, and tree roots that had grown through the pipes. It is very important that you do not flush things down the toilet.



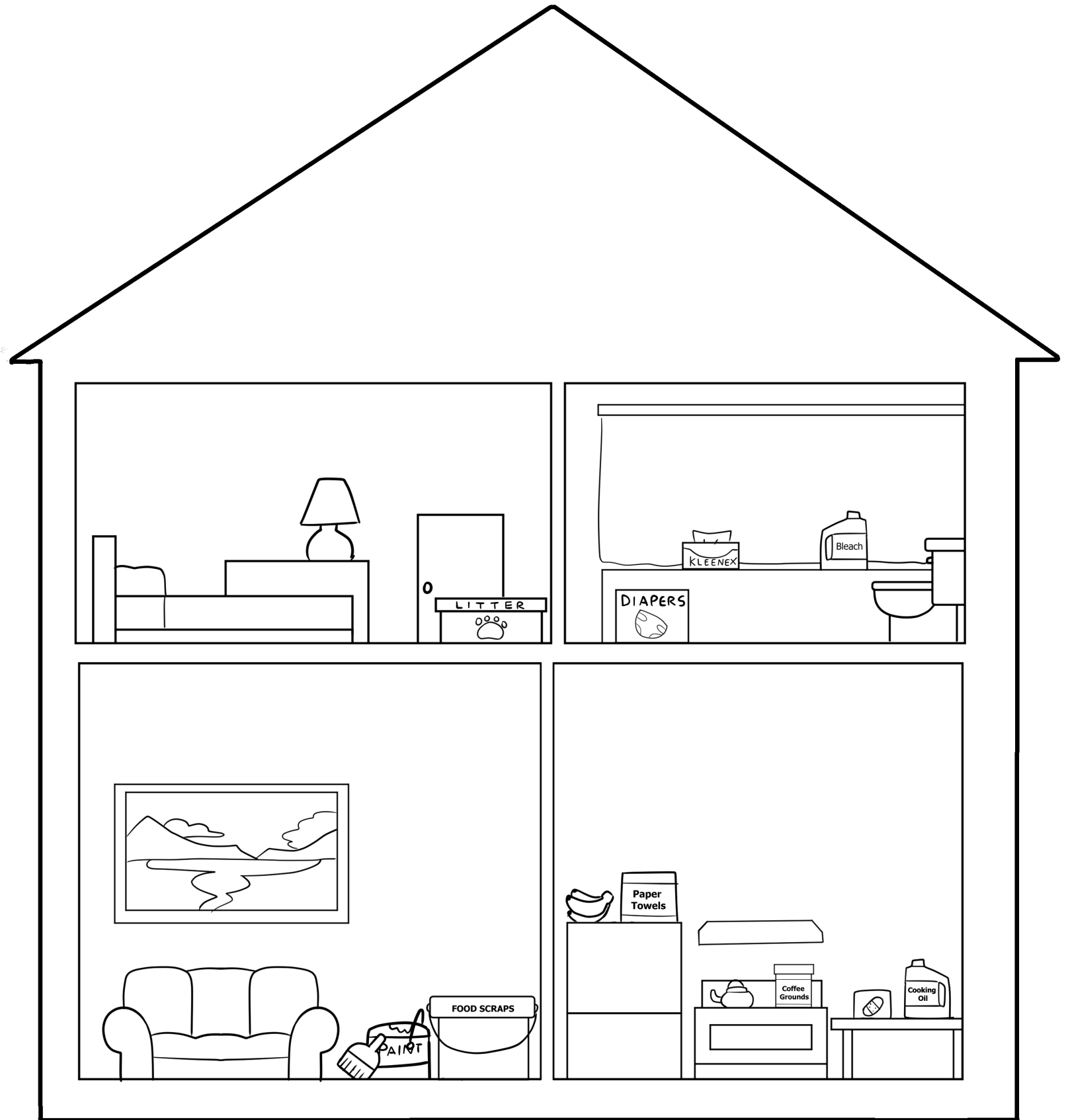
No problem! That's what the Water Heroes are here for!



Thank you for everything, Plumber Parker!

Learning Activity:

Circle 8 items that you should never
put down the toilet



Key: diapers, kitty litter, food scraps, paint, cooking oil, coffee grounds, paper towels, bleach

Tear-Out Page:
Plumber Parker



For Parents and Teachers:

Plumbing Safety

- Do not flush any wipes even “flushable wipes” down the toilet.
- Never flush disposable diapers down the toilet.
- Do not flush anything cotton or made of plastic (such as band aids).
- Do not flush hair, cat litter, dental floss, prescription drugs, tissues or paper towels or feminine products down the toilet.
- Do not flush food down the toilet.
- Do not dump fats, grease, or oil down your kitchen sink or toilet.
- Do not put food waste or coffee grounds or any down your kitchen sink drain.
- Never pour paint down drains.
- Do not connect your roof drain to the sewer
- Do not put motor oil, antifreeze, pesticides or fertilizers down any drain

Manhole Safety

- Don't pull lids of manholes.
- Don't throw stuff into manholes.
- Do not dump any chemicals into manholes.
- Do not park over manholes or put anything on top of them.

What Plumbers Do

- Plumbers work with the water operators at the wastewater treatment plants.
- They install water meters.
- They measure and keep track of the flow of wastewater coming in and going out of the plant.
- They help plant operator clean the bar screens
- They add chemicals to the wastewater treatment
- They fix any plumbing problems in the wastewater plant
- They help people in the community when there are plumbing problems
- They also help the Public Works Department when they get calls of water back up



See you again for the next H2O Hero adventure!